



Technical Rider

CHAN	INSTRUMENT	MIC/DI	INSERT
1	KICK	B52, D6, BETA 91	GATE
2	SNARE TOP	SM57	GATE
3	SNARE BOTTOM	SM57, B57	GATE
4	HH	SM81, C451, KM184	GATE
5	RACK TOM 1	E604	GATE
6	RACK TOM 2	E604	GATE
7	FLOOR TOM	E604	GATE
8	OH SR	C414, SM81, KM185	GATE
9	OH SL	C414, SM81, KM185	GATE
10	GTR SR	E509, E609	GATE
11	GTR SR	SM57	GATE
12	GTR SL	SM57	GATE
13	GTR SL	E509, E609	GATE
14	BASS	SM57	GATE
15	BASS	SANSAMP DI (ON EFFECTBOARD FRONT OFF STAGE.)	GATE
16	BASS VOC	BETA 58	GATE
17	LEAD VOC	BETA 58	GATE
18	GTR VOC	BETA 58	GATE
19			

PLEASE PROVIDE AT FOH:

-2X REVERB (TC/SPX)

-1X TAP-DELAY (D-2/2290)

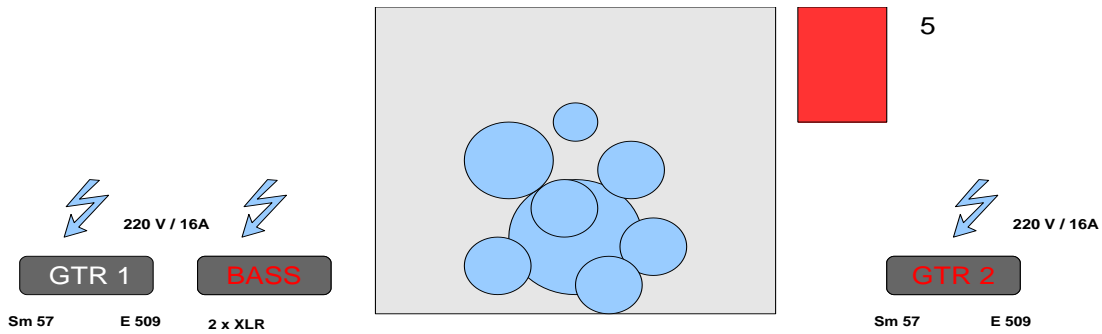
-STEREO GRAPHICAL EQ

-5X GATE (XTA/BSS)

-5X COMPRESSOR (XTA/BSS)

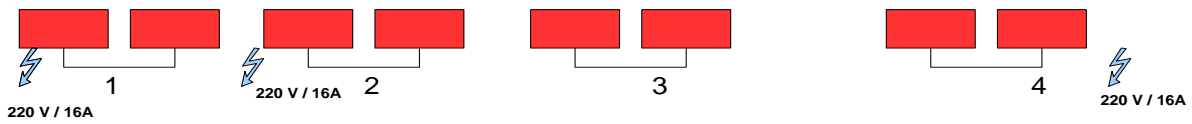
-ALL DRUMCHANNELS ON SUBGROUP FOR STEREO COMPRESSOR

NO LIMITING ON MAIN SYSTEM!



VOCAL Bass:

LEAD



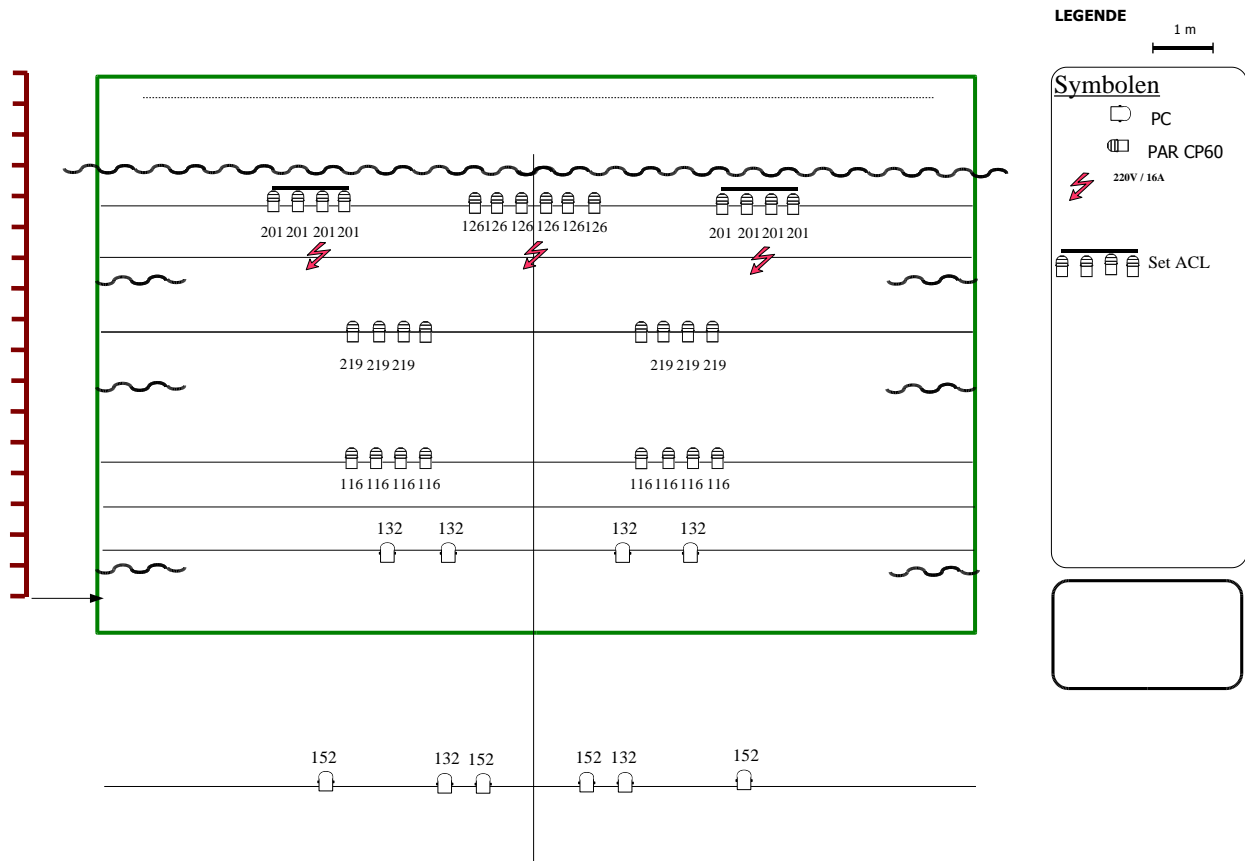
Monitoring:

- There are at least 4 separate monitor mixes required
- Each monitor should have a 31-band EQ
- Each monitor should be able to handle high SPL and should be checked for unwanted frequencies before arrival
- 2 copies of this monitor guide should be present at the monitor desk
- Level settings are just indications (+ / -)
- All channels not mentioned above must be set to 0
- Monitoring guide is subject to change (depending on: amount of groups, side fills, stage size, ...)

	stage right	center	stage left	drumkit
Kick	5		5	7
snare				
bass	3			
GTR stage R			4	7
GTR stage L			4	7
Lead vocal		8		
vocal stage right	6			

Scale: 1 = the monitor works and I can hear the instrument
10 = The monitor kicks your balls into your throat (very loud!)

Technical rider lights



Remarks:

- **DISABUSE will not provide a light technician.**
- **If you have your own strobos, special effects etc feel free to use them.**
- **We use a BANNER behind the drumkit 6x2,5 m**
- **If possible, we would welcome digital recording of the concert (film/sound)**

Please feel free to contact us if you have any questions:

p.beek3@kpnmail.nl